

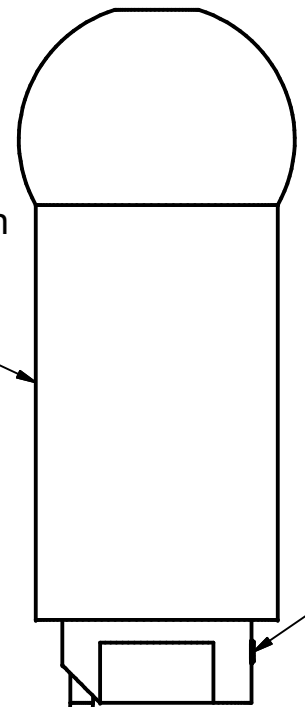
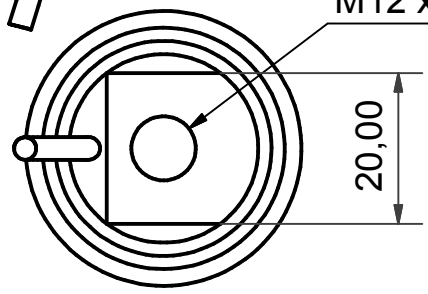
M10 or M12 threaded version

Quaife specific version

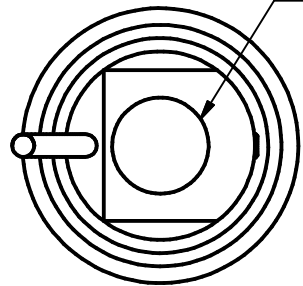
Use flats to tighten.
Do not twist load cell body!

Load cell must be mounted with cable to front of car.

M10 x 1.5
or
M12 x 1.25



M3 grub screw.
Grind flat on gear lever for screw to locate.

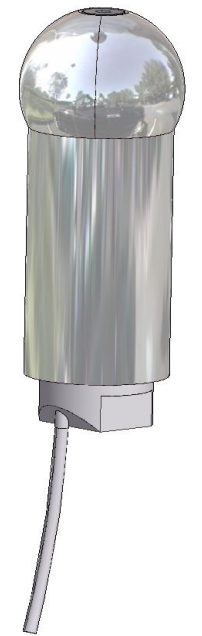


1/2" plain hole for Quaife gear lever

Output voltage: 0.5v - 2.5v - 4.5v
No load voltage = 2.5v nominal

Range: $\pm 150\text{N}$ at full scale

Wiring colour code:
Red = +12v supply (5v option)
Black = ground
White = signal



Designed by Neil Wallace	Checked by	Approved by - date	Date 11/01/2016
Geartronics Ltd.		Gear knob load cell	
		GKLC	Edition 1.0 Sheet 1 / 1