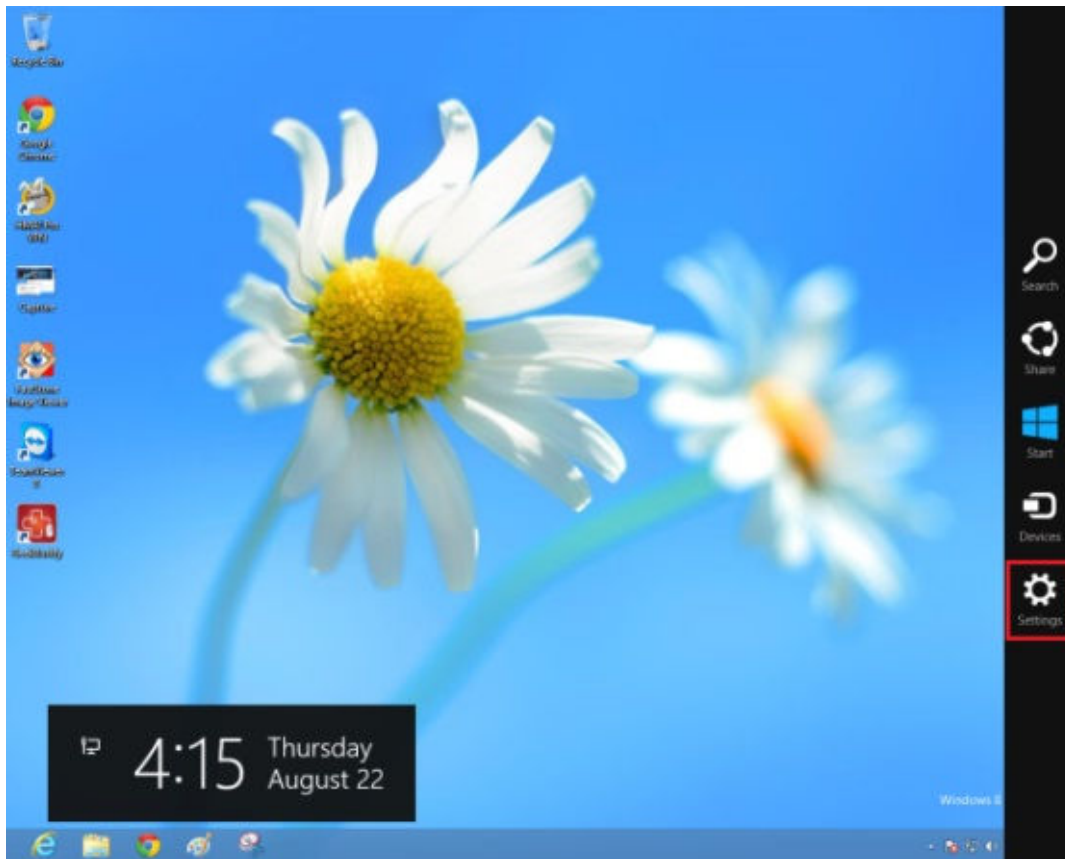
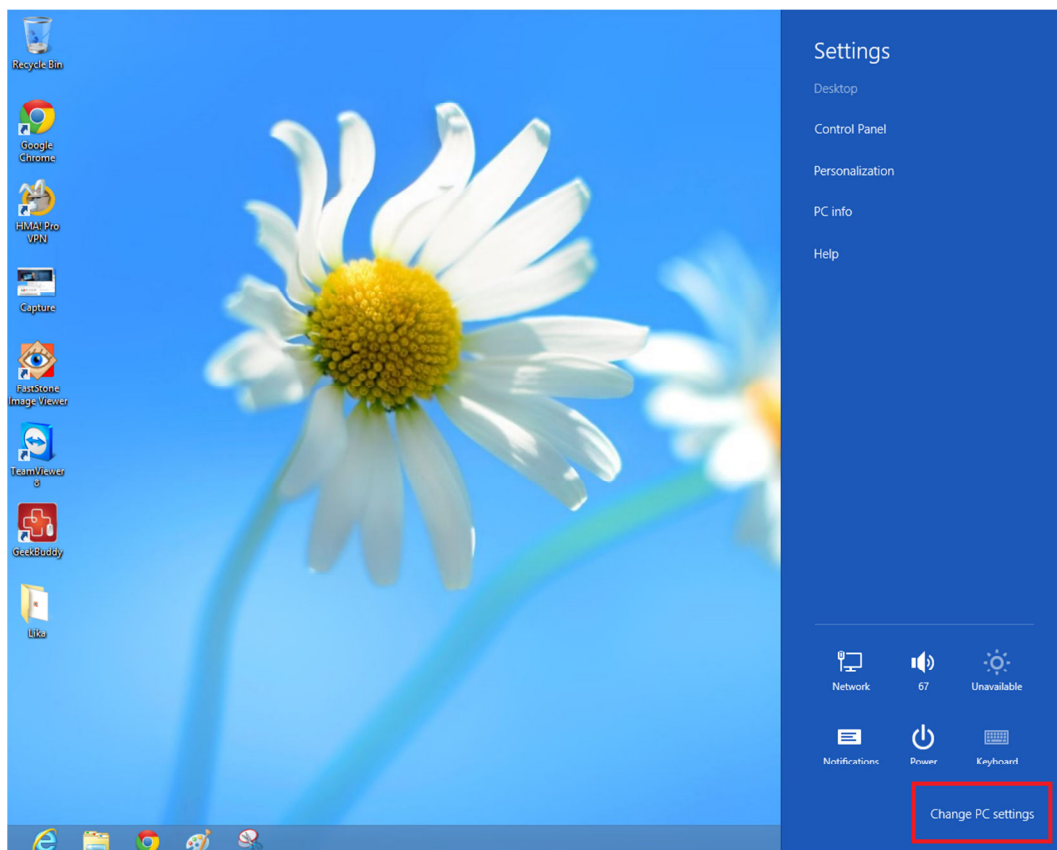


How to disable driver signature enforcement in Windows 8

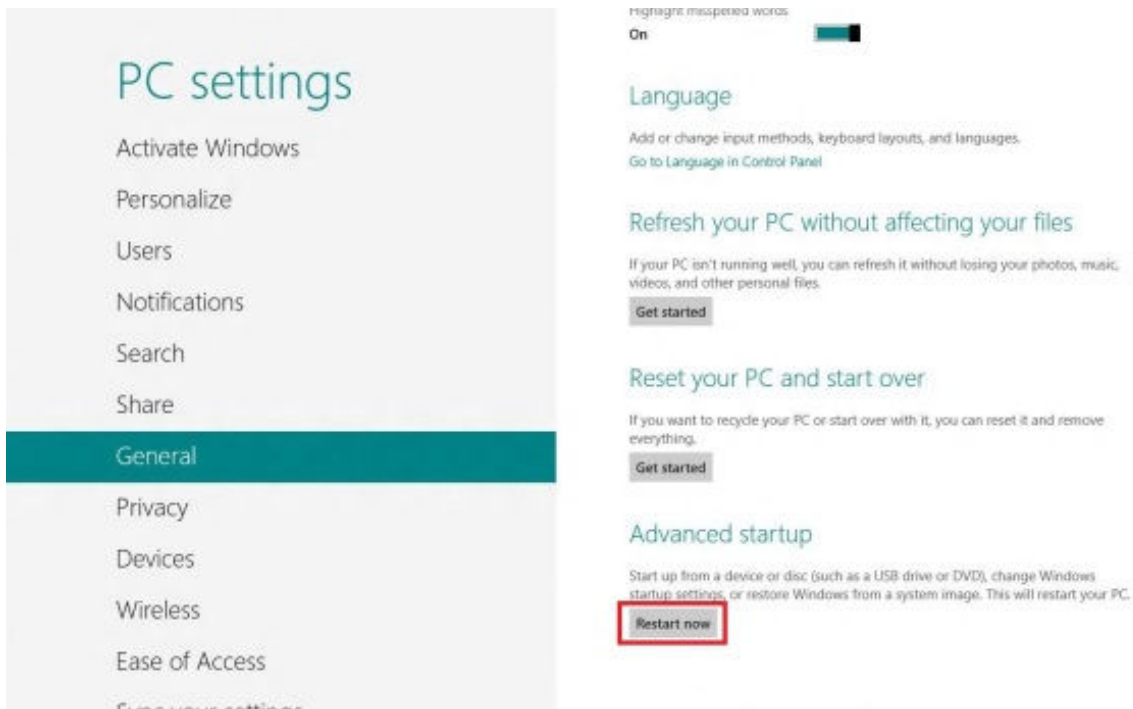
1. First, swipe from the right side of your screen to show the charm bar and select **"Settings"**



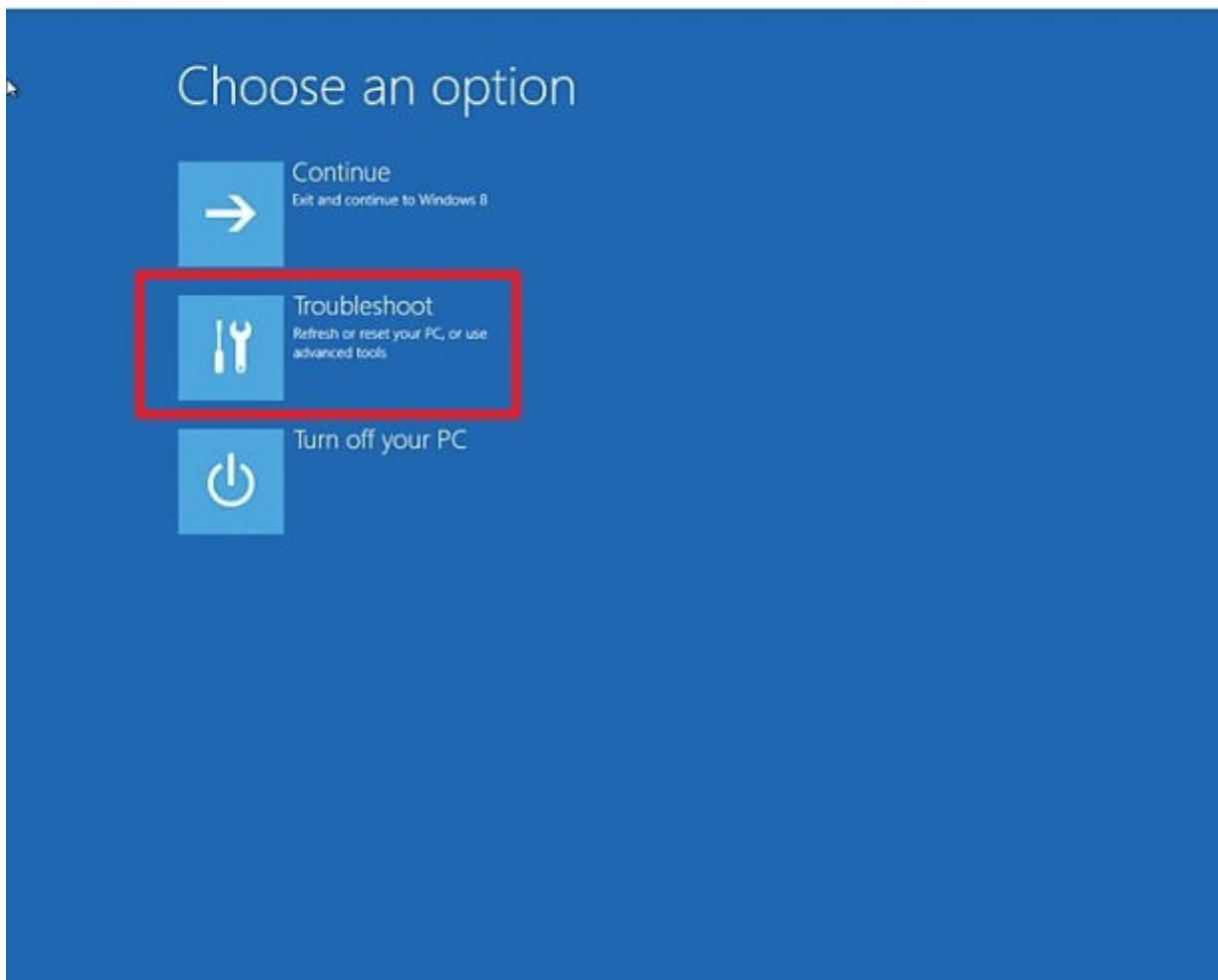
2. Select **"Change PC Settings"** at the bottom right of the screen:



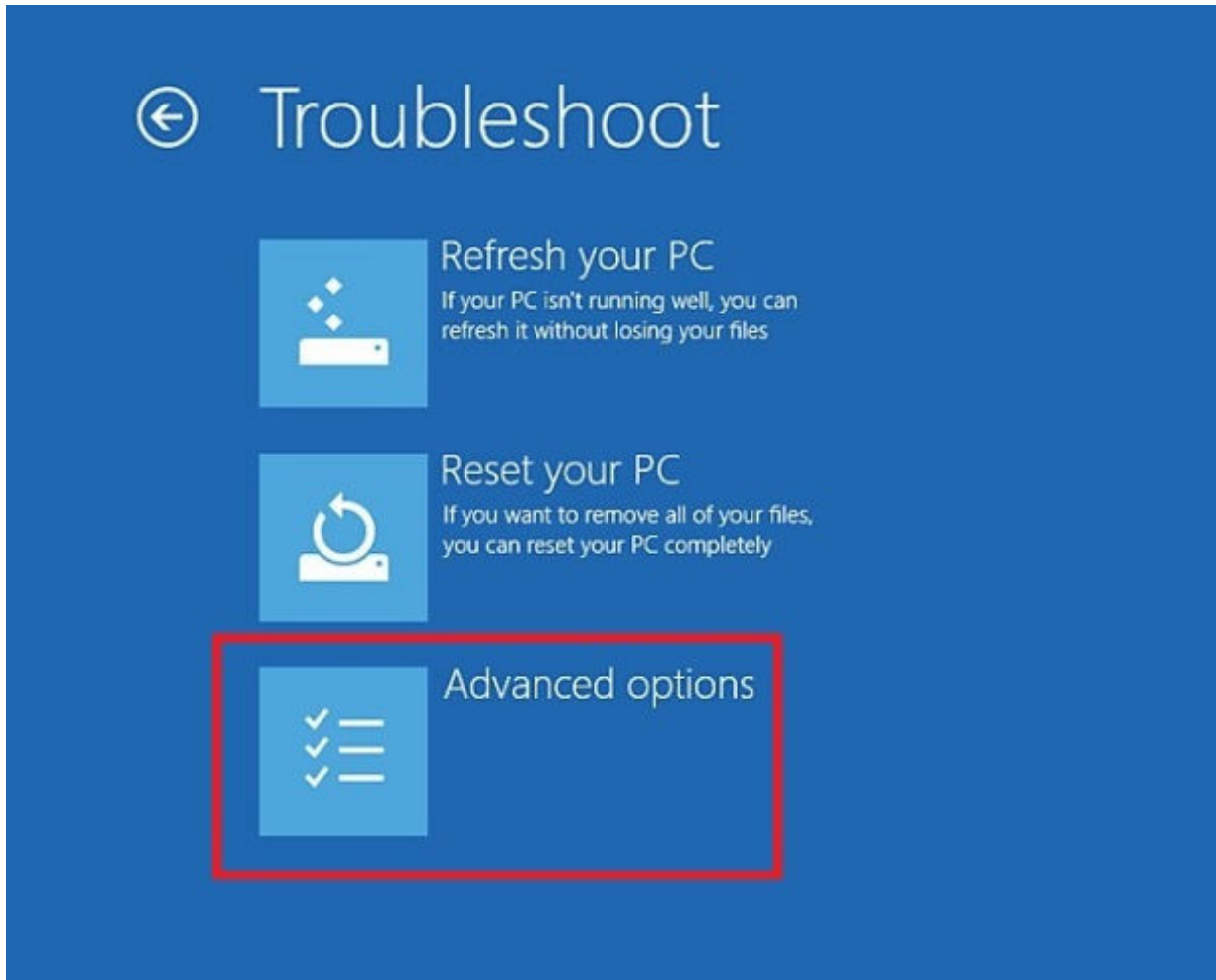
3. Select **"General"** settings (or **"Update and recovery"** then **"Recovery"** on some systems) and then under **"Advanced startup"** Click on **"Restart now"**:



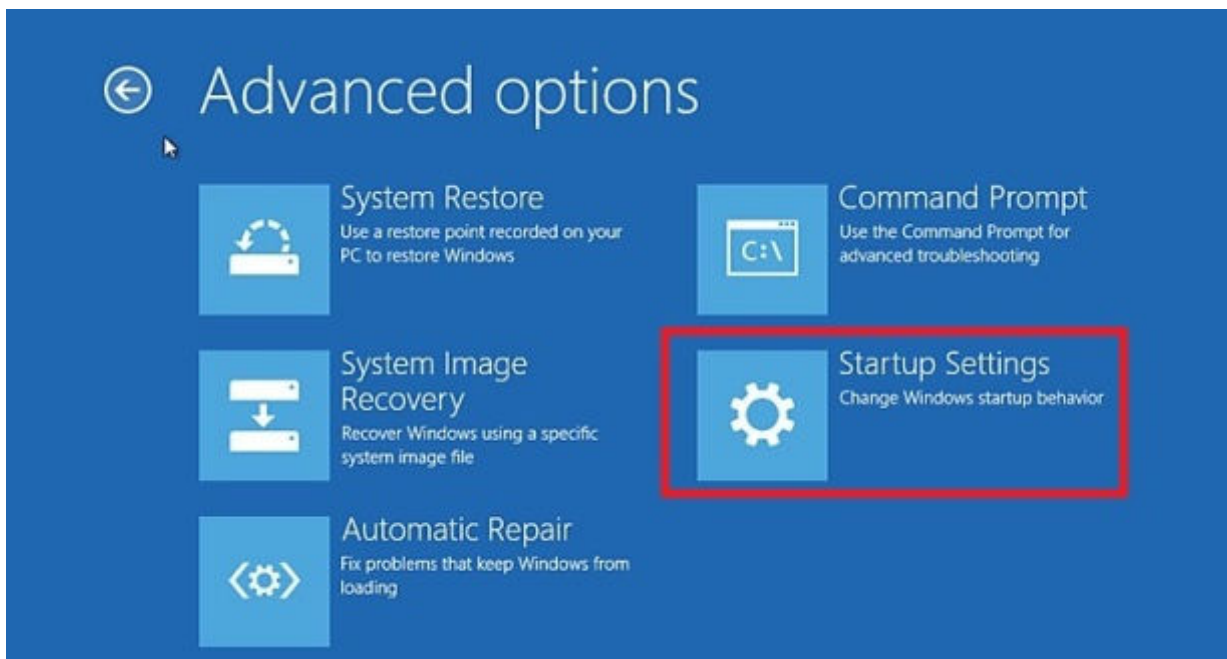
4. When the system restarts, click on **"Troubleshoot"**:



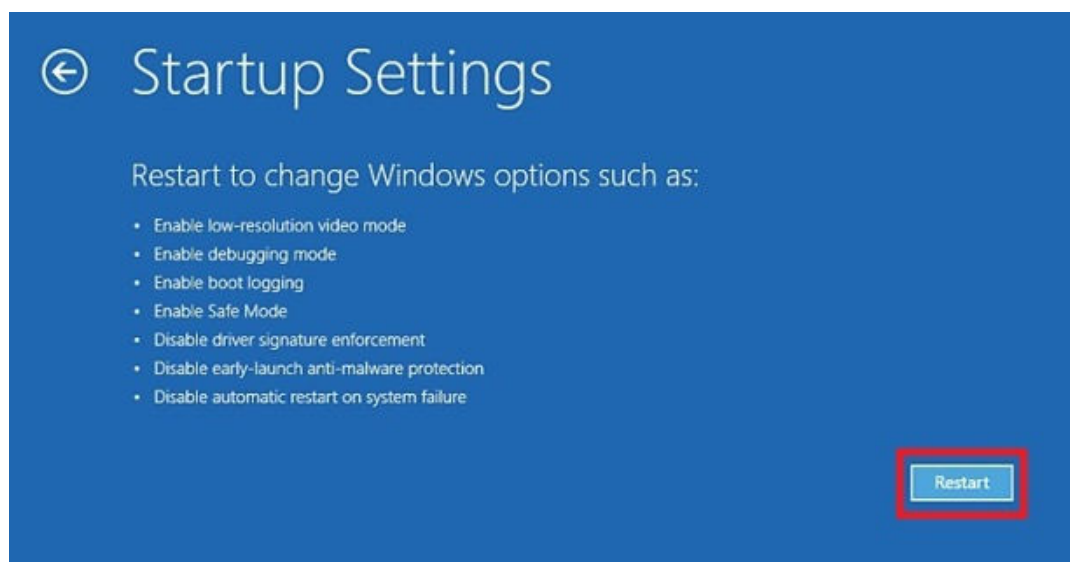
5. On the next screen, choose **"Advanced Options"**:



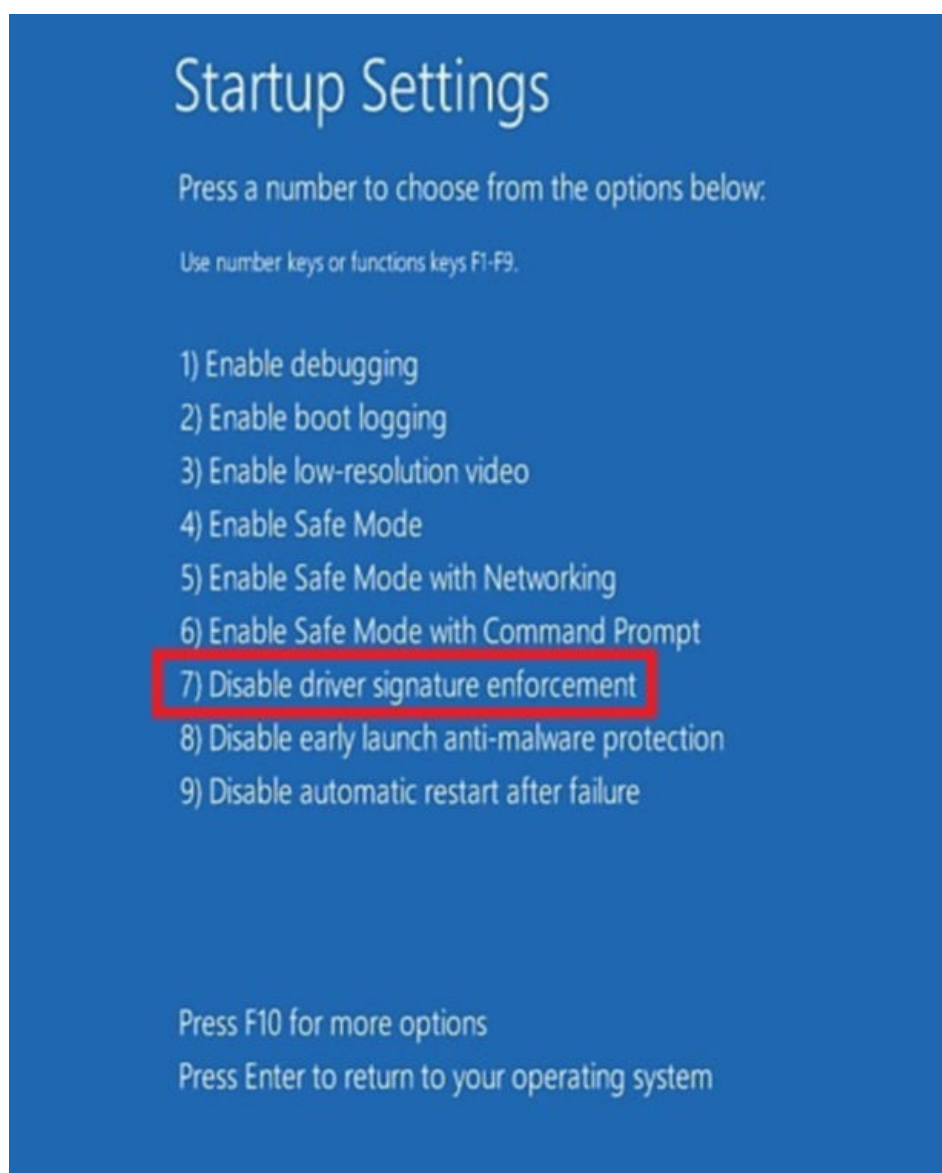
6. Then click on **"Startup Settings"**:



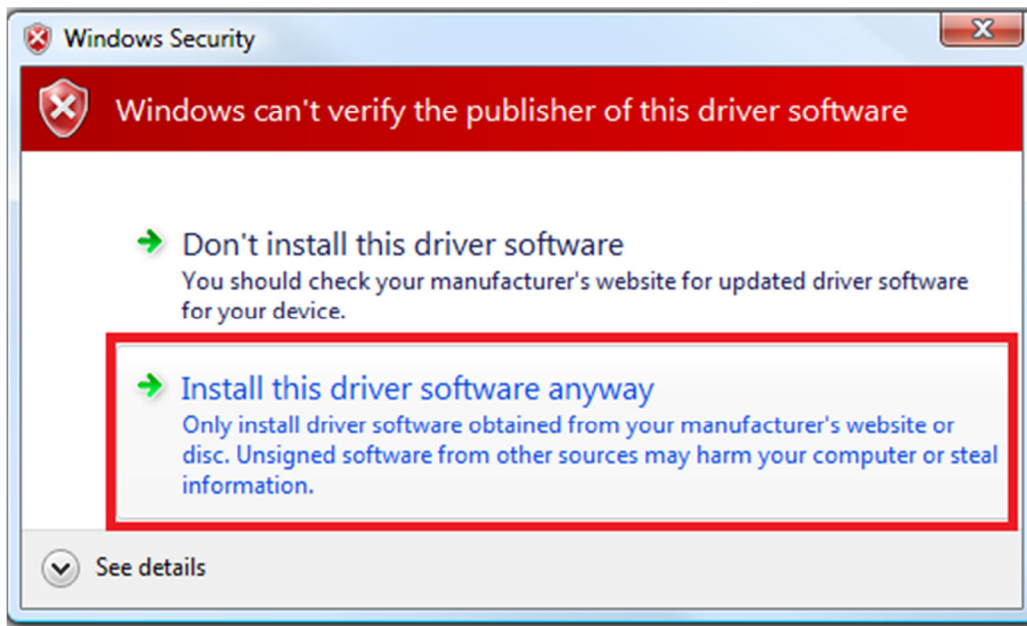
7. Then click on the **"Restart"** button:



8. After your computer reboots for the second time, another screen will appear where you will be asked to choose an option. Select 7 to **"Disable driver signature enforcement"**. Note: if you are using a tablet PC you will need to connect an external keyboard as the on-screen keyboard is not available at this stage.



9. Windows will then appear to boot normally. You will then be able to install the driver as normal. When this prompt appears on screen. Select **"Install this driver software anyway"**:



10. Feel highly satisfied that you have defeated Microsoft's control-freak nanny who thinks she always knows best, and that you haven't had to pay extra money for the privilege of using signed drivers!